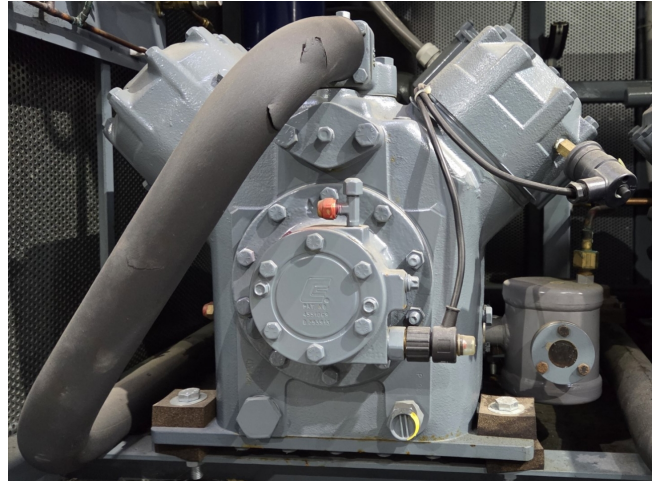


## DWM D4DH5-250X-AWM/D

### Specifications

Marka	DWM
Typ	D4DH5-250X-AWM/D
Czynnik chłodzący	Freon
kW at 0°C/+40°C	60,8
kW at -5°C/+40°C	50,4
kW at -10°C/+40°C	41,3
kW at -20°C/+40°C	26,7
kW at -30°C/+40°C	16,0
Poziom oleju w systemie	✓
Okno widokowe	✓
m <sup>3</sup> / h	70,9
Uwagi	Y.o.b. 2007
Waga kg.	225
Rozmiary	750x600x420 mm (LxWxH)
Stock	2



### Description

#### Used DWM D4DH5-250X-AWM/D

Used DWM Copeland D4DH5-250X-AWM/D semi-hermetic piston compressor on Freon. Complete with a oil level system AC&R and a sight glass. The compressor has a displacement of 70,9 m<sup>3</sup>/h at 50 Hz. \*Why choose for HOSBV? We are not only the largest used refrigeration specialist in Europe, but also, we deliver all equipment including an extensive test, warranty and an industrial cleaning. \*Optionally we can also perform a new paint job and arrange the logistics.

